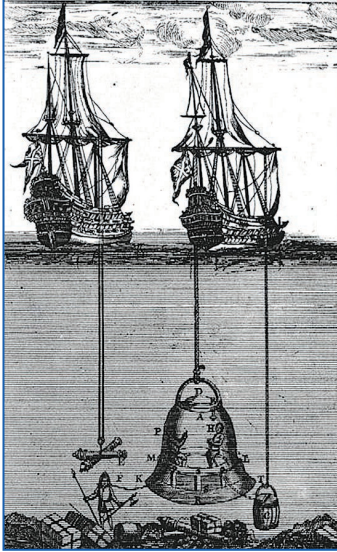




EXPERIENCE IN DEPTH

F O R E W O R D

What is Deep?



**Eclipse Group
delivers innovative
subsea services
and solutions to
clients worldwide.**

Over 100 years ago, working in water depths greater than 100 meters, was inconceivable, possible only in the fiction novels of the time. The literary classic, *20,000 Leagues Under the Sea*, written by Jules Verne in 1870, described a mysterious “sea monster”—a submarine that travels to the deepest parts of the world’s oceans. This is an impressive accomplishment, even by today’s standards!

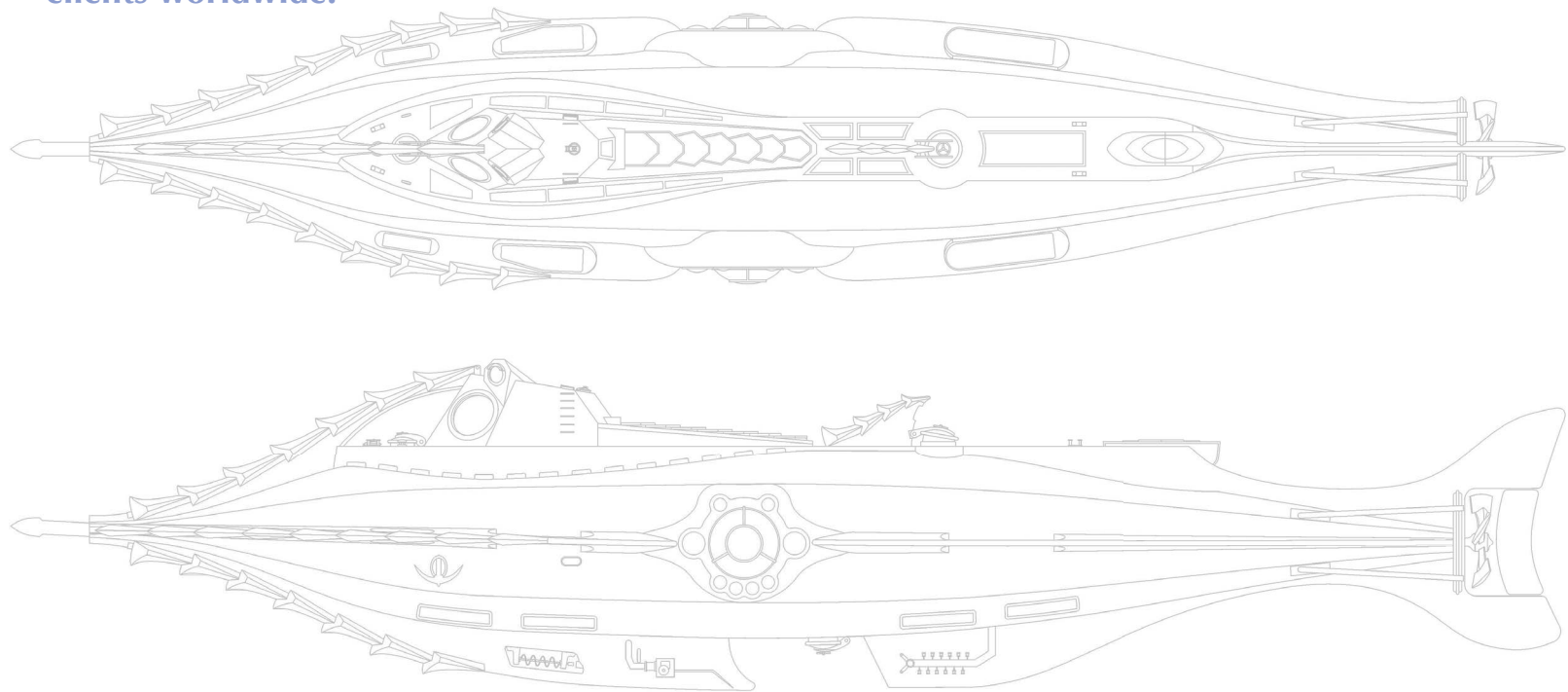
Today, reality is mirroring the imagination of this brilliant author. Both commercial and government entities face the requirement of accomplishing tasks at ever-increasing ocean depths. Our clients are faced with significant technological challenges with relatively few options.

To this end, I would like to introduce Eclipse Group and our comprehensive range of subsea services. Our subsea capabilities successfully operate to depths of 6,000 meters. And, yes, we can still take care of your shallow water requirements!

Our core operational experience, combined with state-of-the-art assets and geographic reach, provides our clients with the resources and expertise they need to successfully execute their worldwide projects in search and recovery, energy, and government/military operations.

Our mission is to always provide safe, innovative and cost-effective solutions to our customer. Our brochure provides a comprehensive description of our corporate capabilities and operational experience. We welcome the opportunity to discuss any of our services with your organization.

Steven Saint Amour
Chief Operating Officer
Eclipse Group Inc.



INTRODUCTION

Recognizing the growing demand for comprehensive, deep-water ROV services, Eclipse Group was founded in 2009 as a woman-owned business. The executives of Eclipse Group have been at the cutting edge of the commercial deep water ROV market since 1985, with 46 years of combined experience in the subsea industry.

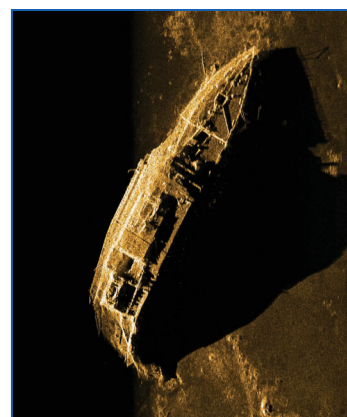
Prior to 1990, the commercial subsea industry worked in water depths generally less than 3,000 meters. Subsequently, Steven Saint Amour was involved in the operation of one of the first commercially built ROV systems capable of working at 6,000 meters. As the scope and complexity of global subsea operations have evolved, our team led by Steven has been at the forefront of deep water advances.

Eclipse Group provides comprehensive subsea services

Through our long-standing professional relationships, we have assembled a premier team of project managers, operations personnel, engineers, suppliers and support vessel operators. Sharing our core strengths in planning, organizing and executing complex at-sea operations, Eclipse Group gives global clients the edge needed for successful subsea operations.

Our service lines include:

- Marine services
- Vessel operations and management
- Subsea services
 - ROV operations
 - Diving operations
- Government services
- Civil and military air crash investigation
- Construction and infrastructure
 - Survey
 - Cable and pipeline



Operations are
about people and
we have the best
in the business.

E X P E R I E N C E

Depth of experience equips us to respond to unique subsea challenges

When time is of the essence or the stakes are high, our global clients rely on us to provide vital subsea expertise and resources, while upholding the highest standards of safety and professionalism. Through our global partners, Eclipse Group has preferential access to Dynamically Positioned (DP) deep-water dive support vessels, support equipment and staging yards, enabling our team to quickly mobilize and execute high-priority missions.

Technical highlights from our teams' past experience include the execution of search, investigation and recovery operations of six major civil aviation airliners, numerous military aircraft, two spacecraft, one military submarine and several historic shipwrecks. Each operation presented it own unique challenges. Our team responded to these challenges with specialized experience and technology resulting in numerous successful operations.

Experience sets us apart from the competition!

Technical Experience

1999	Discovery of the Israeli Submarine INS DAKAR	Depth 3,000 meters
2000	Search and Recovery of H-2 Rocket	Depth 3,400 meters
2000	Search and Recovery of a IAF F-16	Depth 1,400 meters
2000	Recovery of the INS/DAKAR Coning tower	Depth 3,000 meters
2000	RMS Titanic Inspection	Depth 3,700 meters
2003	Search and Recovery USN SH-60 Helicopter	Depth 2,900 meters
2003	Search and Recovery USN F-14 Tomcat	Depth 3,200 meters
2005	Search and Recovery Tunic ATR-72	Depth 1,450 meters
2007	Search and Recovery Adam Air, Boeing 737	Depth 1,400 meters
2009	Search and Recovery Yemeni Air Airbus 310	Depth 1,200 meters
2010	Search and Inspection AHS CENTUAR	Depth 1,200 meters
2011	Recovery of Air France Flight 447	Depth 3,900 meters



Our experts have worked at the forefront of subsea and ROV operations for over 25 years.

WORLD REACH

Eclipse Group brings together a world of specialized services and support

Eclipse Group is a U.S. company based in Maryland, with offices and strategic partners in the United States, United Kingdom, Cyprus and Singapore. Our global reach supports our diversified customer base of international and U.S. businesses and government agencies. To assist us in bridging cultural gaps, our global team employ staff that are fluent in Arabic, English, German, French, Italian, Spanish and Greek.

Global Reach Initiative



1. Eclipse Group Corporate Office
2. Guice Offshore LLC
3. North Lake Marine Shipyard

4. Subsea Specialists, Ltd.
5. EDT Offshore, Ltd.
6. Cabaco Marine Pte., Ltd.

MEET OUR GLOBAL TEAM



EDT Offshore, Ltd.

- Founded in 1983, EDT Offshore is based in Limassol, Cyprus. EDT is a multi-national corporation with corporate entities in Egypt, Lebanon, Israel, Qatar, and Libya.
- EDT's service lines include vessels operations and management, bunkering, agency, vessel brokerage, aviation, marine construction, desalination installation, and dredging operations.



North Lake Marine Shipyard

- North Lake Shipyard is located in Seattle, Washington. Facility capabilities include two deep-water piers, two dry docks, 100T crane and ancillary support equipment.
- North Lake owns the 180' MV Blue Fin suited for a wide range of support roles in the Pacific.



Guice Offshore, LLC.

- Guice Offshore LLC is a small business service provider based in Madisonville, LA. Guice is engaged in the business of providing high specification offshore support vessels to both commercial and government customers worldwide.
- Guice Offshore services include vessel management and vessel brokerage of a full range of offshore vessels on behalf of oil, construction and service companies for transportation, survey, diving and ROV activities.



CABACO Marine Pte, Ltd.

- Based in Jorong East, Singapore, Cabaco Marine was established in 1989 as a marine service company and developed into a project-oriented offshore service company.
- Cabaco provides marine logistics support using fully outfitted vessels and barges combined with geospatial technology, deep diving systems, manned and unmanned submersibles to conduct subsea construction, pipe and cable installation, Inspection, Repair and Maintenance (IRM) contracts, freespan correction, trenching, salvage and demolition.

**Our team can meet
your global needs.**

Specialist Subsea Services, Ltd.

- Specialist Subsea Services Ltd, was first registered in Scotland, UK in September 2007, and commenced offshore geotech, hydrographic survey and ROV contracts in the first quarter of 2008.
- Specialist Subsea Services is a subsidiary of an international group in the UK and Norway, providing support services to telecom, offshore alternative energy, and oil and gas industries from IRM, construction, acoustic control, remote tooling intervention, near shore to deep-water operations in the northern hemisphere from the company base in Aberdeen.



MARINE AND SUBSEA SERVICES

ROV Operations

Unmanned remote solutions are at the heart of our business. Our subsea capabilities start at the surface of the ocean, descend to a depth of 6,000 meters and include everything in between!

Every operation has its own unique requirements. Eclipse Group responds using our own in-house capabilities. We have developed our own line of ROVs that satisfy the requirements of our operators and the expectations of our clients. These systems are purpose-built to provide safe, reliable operations and can be configured to perform mission specific operations.

Responsiveness is priority for Eclipse Group. Through strategic allocation of our subsea resources, we can provide cost-effective and timely response to our clients' projects. Our team has pre-positioned ROV assets at several locations in the U.S. and eastern Mediterranean, allowing us to quickly mobilize from our teammates pier-side facilities to their offshore vessels.

Engineering

Engineering is defined as the art, action and skill of practical application. Our engineers embody these concepts!

Eclipse Group provides project management, engineering and manufacturing solutions. We specialize in concept design, prototype fabrication and testing. Our team is constantly striving to identify innovative and cost-effective solutions to our customer's technical risks.

Our engineers are not isolated from the real world by spending all day behind a desk and computer. They are hands-on professionals who routinely participate in operations to improve their engineering skills.

ROV capabilities include:

- Construction
- Geophysical survey
- Pipeline and platform survey
- Rig support
- BOP intervention
- CP inspection
- Pipeline burial
- Salvage
- Film and video projects

Engineering disciplines include:

- Marine / Ocean Engineering
- Naval Architecture
- Mechanical Engineering
- Electrical Engineering

P E R M I T T I N G

Permitting

EGI provides expertise in environmental site investigations and subsequent permitting support for development projects. Our environmental specialists begin by conducting desktop and field investigations to characterize existing marine and terrestrial site conditions including land or sea floor cover type, critical species habitat, marine mammal distribution, geological and sediment conditions and other environmental factors.

Our team then works closely with project management and engineering staff on project design and routing to expedite permitting approvals through minimized environmental impacts. This early involvement in the project design phase saves critical time and money in the overall life of a project. We analyze project effects and benefits on environmental resources in development of National Environmental Policy Act documentation including categorical exclusions, environmental assessments and environmental impact statements. EGI also brings extensive experience in other federal and state environmental permitting programs that may be needed for a project, depending on the scope and location.

GOVERNMENT SERVICES

We strive to build strong, successful relationships with our government partners.



Government Services

Eclipse Group has extensive experience working with government agencies and understands the complexities of both domestic and foreign government contracting. Understanding each government's own contracting requirements is a critical step toward the goal of a successful relationship. Our government clients are our partners.

Eclipse Group has implemented accounting procedures and practices that are approved by the Defense Contractor Audit Agency (DCAA) and are compliant with the International Accounting Standards (IAS) and International Financial Reporting Standards (IFRS) as they relate to the European Union. Our accounting and legal departments and those of our teammates are experienced in working with national and foreign entities.

In April 2013, Eclipse Group was awarded a \$22,879,990, 3 year IDIQ contract with the Naval Underwater Warfare Center Division, Newport, R.I. providing operational and logistical support for ocean testing and related at-sea projects. Eclipse Group will provide operational support personnel and specialized equipment such as remotely operated vehicles, diving services, aircraft support, specialized mobilization equipment and vessels with crews and provisioning in support of open ocean sea tests.

In February 2012, Eclipse Group and our teammate Guice Offshore were awarded an \$8,000,000, 3 year IDIQ contract from the National Data Buoy Center (NDBC), a Division of the National Oceanographic and Atmospheric Administration (NOAA). Under this contract we will supply large ocean-going vessels for scheduled and unscheduled maintenance of the Tsunami and Hurricane early warning buoy systems located in both the Atlantic and Pacific Oceans.

GOVERNMENT SERVICES

In July 2012, Eclipse Group was awarded a multi-year IDIQ contract from the Naval Surface Warfare Center as a prime contractor under the Seaport Enhanced program. Eclipse Group as the prime contractor has four teammates – Guice Offshore, LLC, Harris Caprock Corporation, Renmark Pacific Corporation, and Ultimate Engineering, Inc. Under this contract, the EGI Team may provide qualified personnel, materials, facilities, equipment, test instrumentation, data collection and analysis, hardware and software and other services that will support the Navy and Marine Corps as specified in our awarded Seaport-E task orders.



The EGI Team's awarded technical function areas are as follows:

- Research and Development Support
- Engineering, System Engineering and Process Engineering Support
- Modeling, Simulation, Stimulation, and Analysis Support
- Prototyping, Pre-Production, Model-Making, and Fabrication Support
- System Design Documentation and Technical Data Support
- Software Engineering, Development, Programming, and Network Support
- Reliability, Maintainability, and Availability (RM&A) Support
- Configuration Management (CM) Support
- Quality Assurance (QA) Support
- Information System (IS) Development, Information Assurance (IA), and Information Technology (IT) Support
- Interoperability, Test and Evaluation, Trials Support
- Measurement Facilities, Range, and Instrumentation Support
- Logistics Support
- Supply and Provisioning Support
- In-Service Engineering, Fleet Introduction, Installation and Checkout Support



Navy Virtual SYSCOM
Expansion of
SeaPort-e

RENEWABLE ENERGY

Renewable Energy



In October 2012 Eaton Corporation announced its subsea current power generation initiative to efficiently generate, convert and transmit safe, reliable alternative energy from ocean current to Navy and commercial shore facilities. Eaton Corporation has appointed EGI as its design and installation teammate.

EGI was chosen on the basis of our expertise in deep-water operations and relevant experience. EGI is presently developing operational procedures, equipment and tooling for site evaluation and installation of the underwater, utility-scale energy ERG (Electric Ring Generator) system. The ERG system consists of subsea AC current generators, subsea AC/DC solid-state converter switching equipment with relay protection, reliability monitoring, power distribution and transmission systems for delivery of the generated power back to shore and its subsequent connection to land based power grids.

In a parallel effort, Eaton Corporation is developing a product line of high voltage direct current subsea switching equipment. EGI will be responsible for the subsea pressure compensated enclosure design and the installation of the finished units both for oil and gas and renewable energy applications. The EGI and Eaton team are actively exploring new opportunities to apply our combined expertise in marine power systems and distribution.

Legend

- Naval Bases
- Contours (Meters)

Hazards

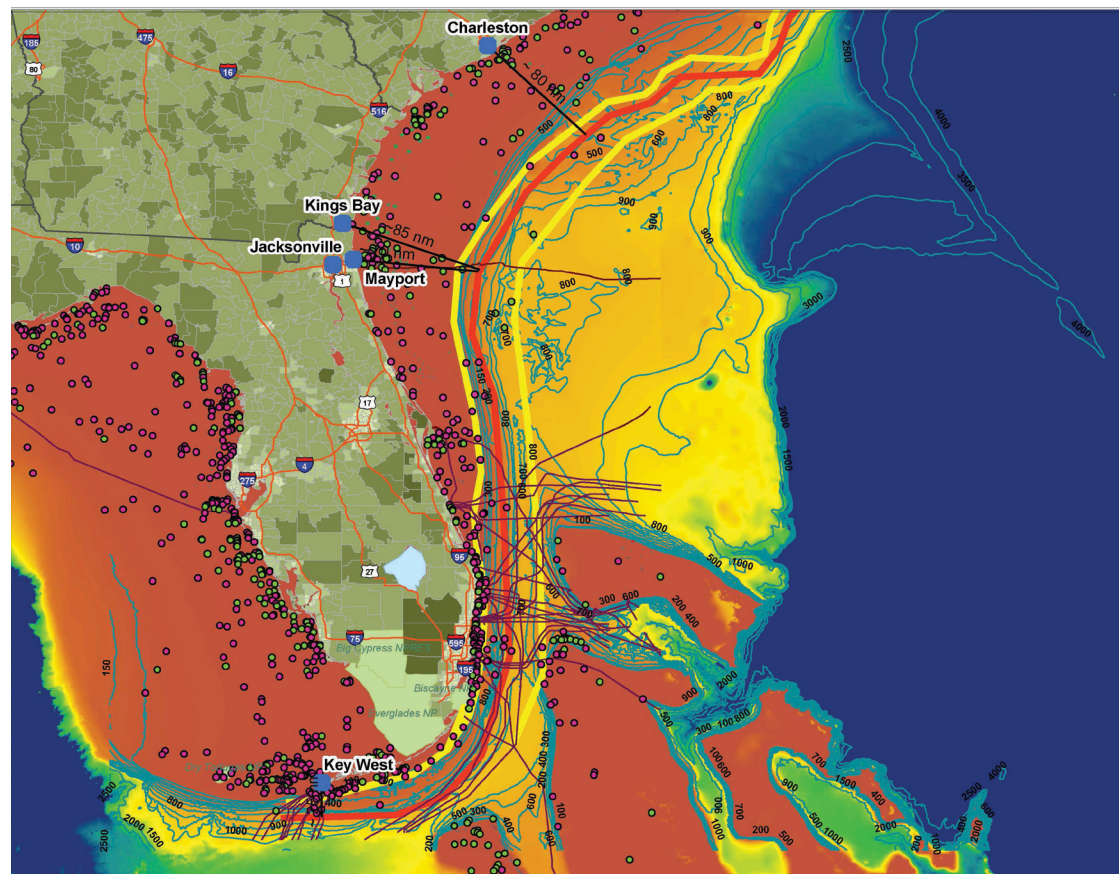
- Fish Haven
- Unknown Obstruction
- Subsea Cables & Pipes
- Underwater Hazard
- Wreck

Soundings

- Depth
- 1 Meter
- 3000 Meters
- Gulf Stream Currents
- 2 Kts
- 3 Kts



Nautical Miles
0 25 50 100 150



COMPREHENSIVE SERVICES

Let us help you move forward

Eclipse Group strives to provide our clients with highly qualified personnel and high value assets to ensure outstanding results.

Our comprehensive service lines include:

- Marine Services
- Vessel Operations and Management
- Subsea Services
 - ROV Operations
 - Diving Operations
- Government Services
- Civil and Military Air crash Investigation
- Construction & Infrastructure
 - Survey
 - Cable and Pipeline Installation

Our mission is to become a leader in comprehensive subsea and ROV services worldwide. We welcome the opportunity to discuss our services with your organization.



Eclipse Group

EXPERIENCE
IN DEPTH

2,000m

Our professional team is second to none in the execution of search, investigation and recovery operations.

4,000m

Our experts have worked at the forefront of subsea and ROV operations for over 25 years.

6,000m



Eclipse Group
1997 Annapolis Exchange Parkway, Suite 300
Annapolis, MD 21401, USA
Tel: +1 410 533 3041
E-mail: sales@eclipse.us.com
www.eclipse.us.com

In-depth. Worldwide. Solutions.

